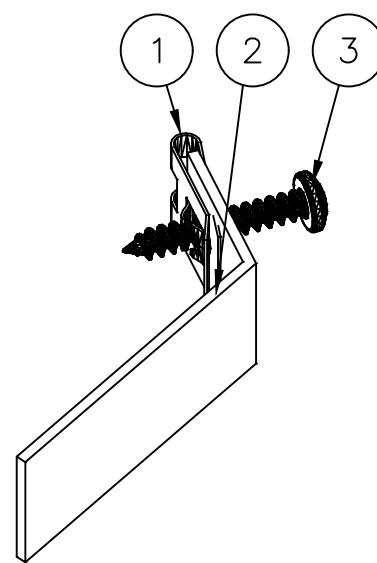


TOP VIEW CLIP ASSEMBLY

SCALE: FULL

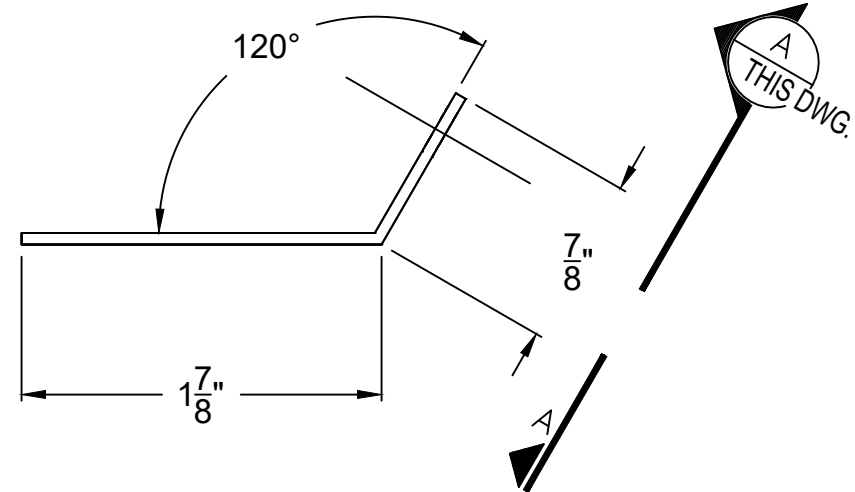


PICTORIAL CLIP ASSEMBLY

SCALE: FULL

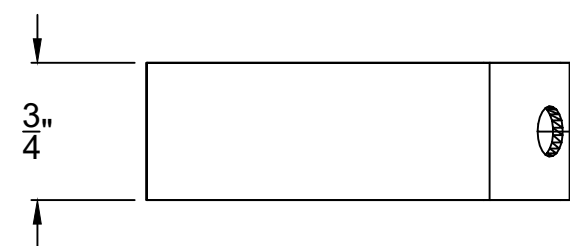
IDENTIFICATION			MATERIAL LIST
ASS'Y	ITEM	QTY./ASS'Y	DESCRIPTION
(A)	ASH TRAY CLIP		
QTY: 1			SHEET 1
	1	1	SPEED CLIP, #8 SHEET METAL, .25" GRIP, STEEL
	2	1	SHEET, 16 GA., SEE DETAIL
	3	1	SCREW, SHEET METAL, #8, STEEL.

A/R AS REQUIRED



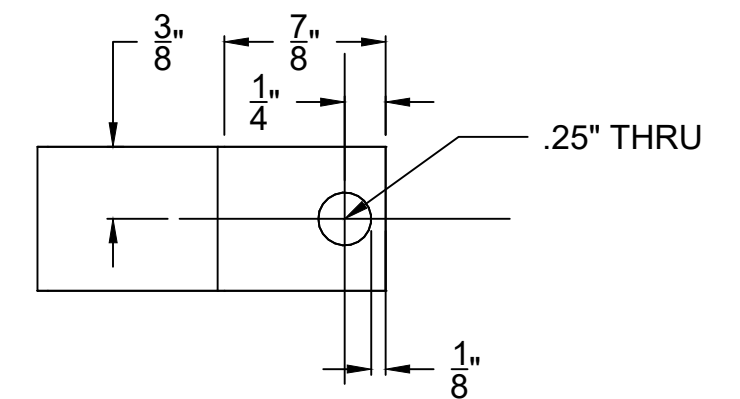
TOP VIEW CLIP ITEM #2

SCALE: FULL



FRONT VIEW CLIP ITEM #2

SCALE: FULL



(A) SECTION A-A

31706-

SCALE: FULL

LOOKING AT HOLE PLANE



CONCEPT DESIGN
NOT TO BE USED FOR CONSTRUCTION
DATE: 26APR2021

NOTES:

- 1.CONSTRUCT CLIP #2 OUT OF .060" STEEL SHEET, 16 GAUGE
2. PAINT: NO PAINT
3. (4) ASSEMBLES REQUIRED PER INSTALLATION.

ISSUE	DATE	BY	APPVD.	DESCRIPTION	UNLESS OTHERWISE NOTED:				ASHTRAY CLIP				DWG. SIZE	
-	-	-	-	-	1) ALL DIMENSIONS ARE IN INCHES	1960 1961 1962 CONSOLES				C		SHT 1 OF 1		
-	-	-	-	-	2) BREAK ALL SHARP EDGES	1960 1961 1962 CONSOLES				ISSUE				
-	-	-	-	-	3) TOLERANCES (NON ACCUMULATIVE):	CHRYSLER 300 CLUB INC.				A				
The design and detailed information illustrated on this document shall remain the exclusive property of an Optimization Company, and their contracted client. Use of any portion of this information for purposes not specified by the terms of that contract is strictly prohibited.					FOR MACHINED SURFACES:		FOR FABRICATION, WELDMENTS, SAWCUT SURFACES, BENDS, ETC:		DRAWN J.HYDE		DATE 06JUL2022	OTI PROJECT NO.		
					DECIMAL 1 PLC. ±.03"	DECIMAL 2 PLC. ±.01"	DECIMAL 3 PLC. ±.005"	FRACTIONAL ±1/16"	ANGLES ±1°	CHECKED RCM	DATE	SCALE 0 1/2" 1" AT TRUE SCALE NOTED		DRAWING NO. 300 CLIP
					CUST. APPRVD. *		DATE *		APPRVD.		DATE			